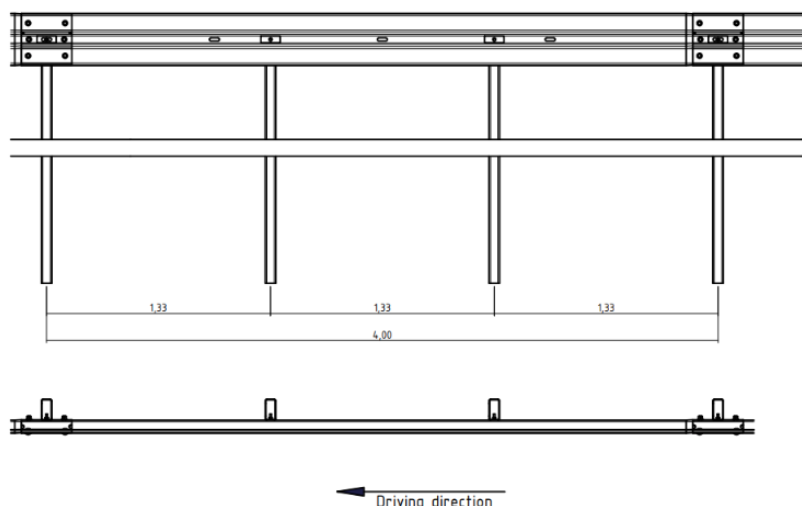
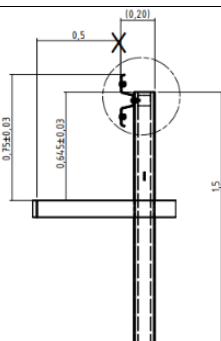


UNISAFE 1.33

Containment level	Working width	Vehicle intrusion	Impact severity level
H1	W3 ($W_N = 1,0$ m)	VI3 ($V_{IN} = 1,0$ m)	A



The one-sided rammed steel protection device consists of corrosion-protected components in accordance with EN 1461. The length of the beams and posts determine the format of an element. The system is characterized by a post spacing of 1.33m and the 4 m long beams attached to the posts (length 1.50 m). The guard rail beams overlap and are fixed with multiple screw connections.

System name	UNISAFE 1.33	
CPR number	0531-CPR-1317-3416	
ITT Report	TB11	CSI 0078\ME\HRB\14
	TB42	CSI 0077\ME\HRB\14
Global warming potential GWP per linear meter of system length		
Width of the system	0,21 m	
Height of the system from the top of the road	0,75 m	
Length of the system elements / assemblies	4,00 m	
Impact severity level	ASI = 0.91	THIV = 27.64 km/h
Working width	1.0 m	
Vehicle intrusion	1.0 m	
Dynamic deflection (normalized)	1.5 m	
Test length	80 m	
System foundation / Ramming depth	Rammed / 0,85 m	
Associated transition structures:		
Comments		